



Guffey Systems



PIVOT POINT

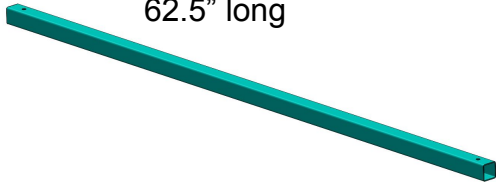
Stock Rack Assembly Guide

REVISION 1
05/2026

STOCK RACK COMPONENTS

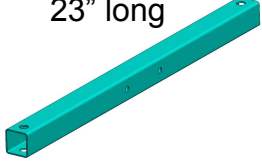
A

Bottom Member
62.5" long



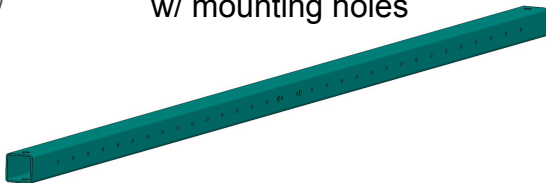
B

Caster Leg Member
23" long



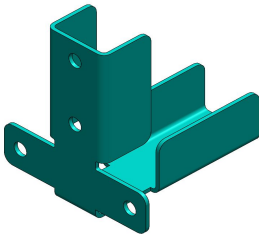
C

Hanger Member
w/ mounting holes



D

Outer Corner Bracket



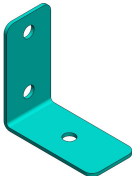
E

Vertical Member
72" Long



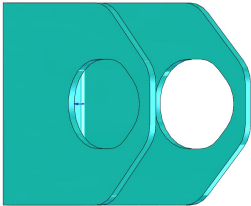
F

L Bracket



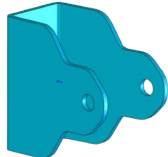
G

Handle Bracket



H

Hanger Rung Bracket



I

Handle Tube



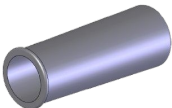
J

Fixed Mount



K

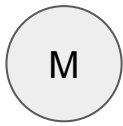
Handle Grip



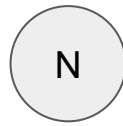
L

Threaded Caster

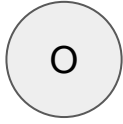
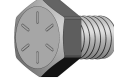




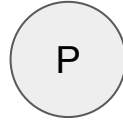
5/16"-18 Screw
2.25" Long



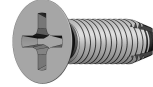
5/16"-18 Screw
1/2" Long



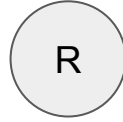
5/16"-18 Lock Nut



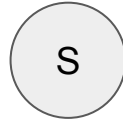
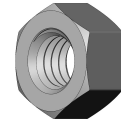
#10-32 Thread Cutting
Screw 5/8" long



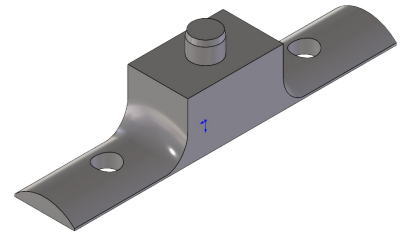
Caster Lock Washer



Caster Hex Nut



Fixed Mount Filler



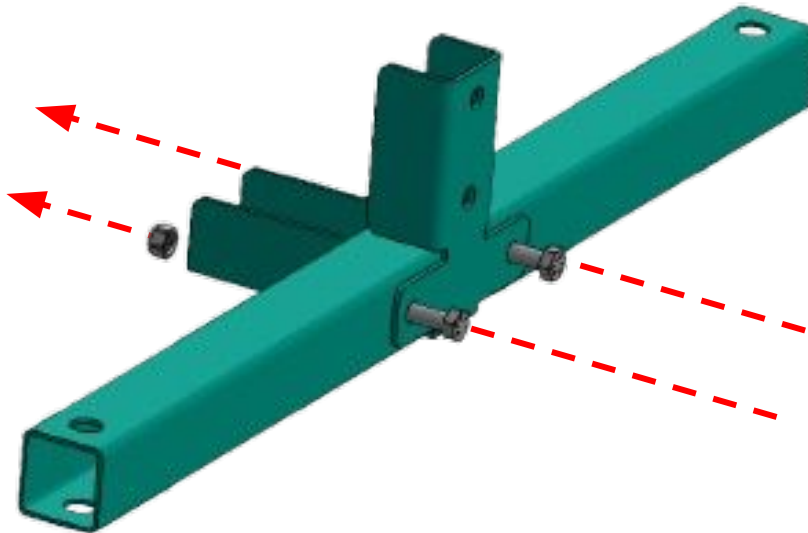
Tools Required:

- Qty 2- 1/2" Wrench or Socket & Driver
- 5/8" Wrench or Socket & Driver
- #2 Phillips Driver

PART ID	DESCRIPTION	QTY-1 LEVEL	QTY-2 LEVEL
A	BOTTOM MEMBER	1	1
B	CASTER LEG MEMBER	2	2
C	HANGER MEMBER	1	2
D	OUTER CORNER BRACKET	2	2
E	VERTICAL MEMBER	2	2
F	L BRACKET	2	2
G	HANDLE BRACKET	2	2
H	HANGER RUNG BRACKET	2	4
I	HANDLE TUBE	2	2
J	FIXED MOUNT	16	32
K	HANDLE GRIP	4	4
L	THREADED CASTER	4	4
M	5/16-18 HEX SCREW, 2.25" LONG	12	14
N	5/16-18 HEX SCREW, 0.5" LONG	8	12
O	5/16-18 LOCK NUT	12	14
P	#10-32 THREAD CUTTING SCREW, 5/8" LONG	32	64
Q	CASTER LOCK WASHER	4	4
R	CASTER HEX NUT	8	8
S	FIXED MOUNT FILLER	16	32

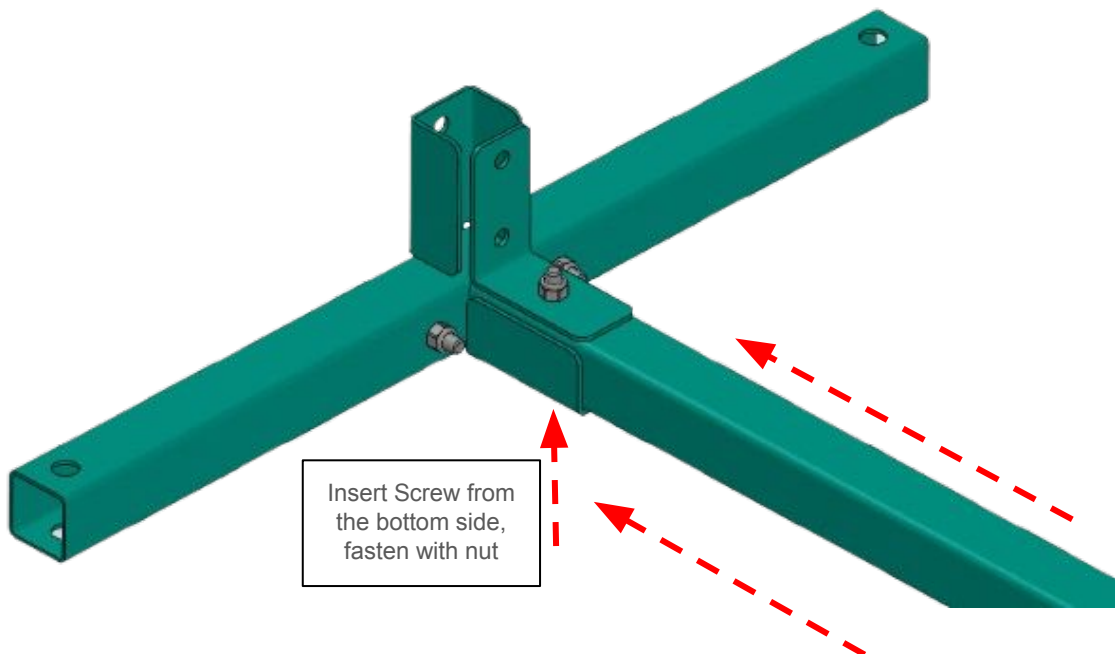
1

Begin by collecting the Outer Corner Brackets (D), Caster Leg Members (B), 5/16x2.25" Hex Screws (M) and Locking Nuts (O). Slide the Leg Member into the Corner Bracket and insert the screws through the aligned holes. The screw should enter from the bracket side. Thread the nuts onto the screws. Repeat this for the other Leg and bracket.



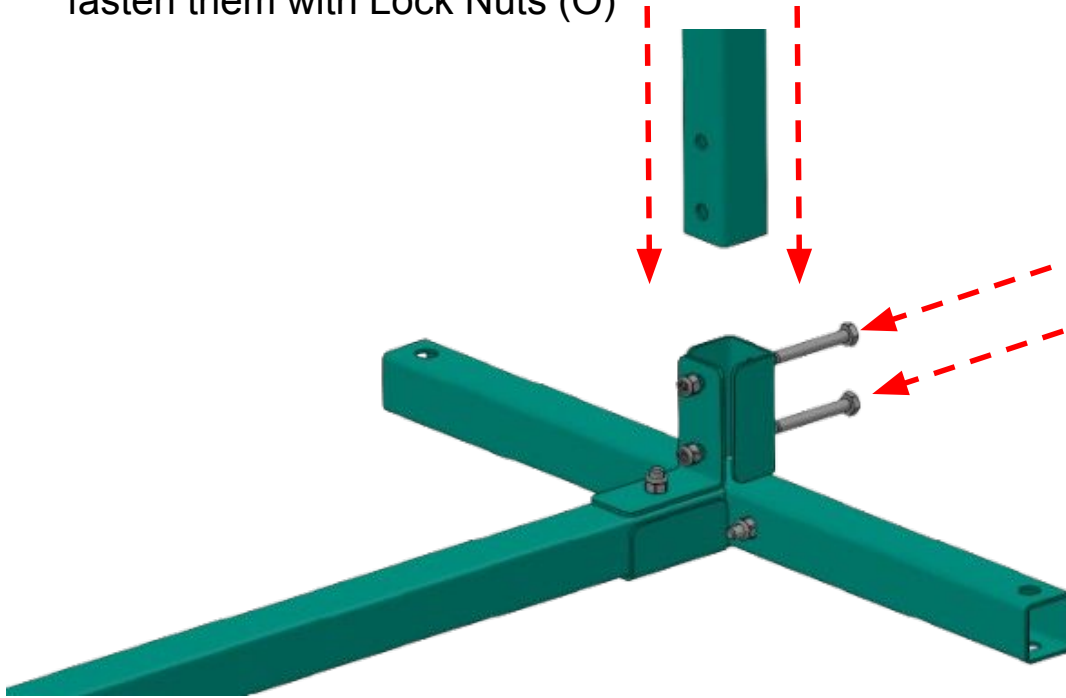
2

Next, collect the Bottom Member (A) and the L-Brackets (F). Place the Bottom Member into the channel perpendicular to the Caster Leg Member and align the L-Bracket (F) above the Horizontal Member. Attach with the 5/16-2.25" Screw (M) and Lock Nut (O). Repeat for other side also.



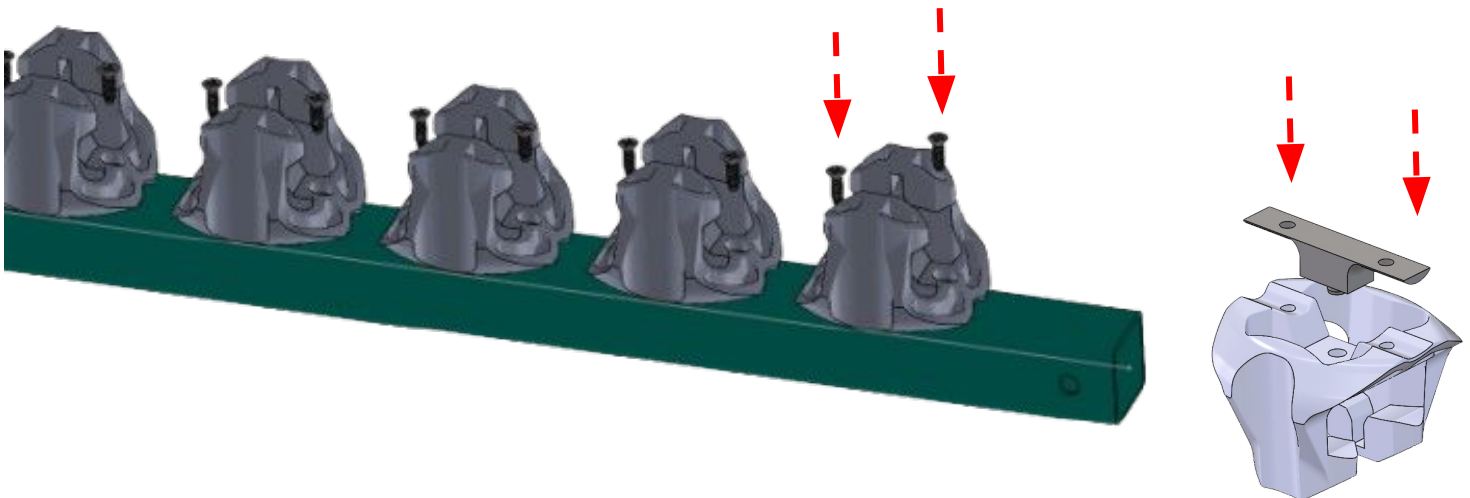
3

Gather the Vertical Members (E). Insert the bottom (end with 2 holes) into the pocket between the L-Bracket (F) and the Outer Bracket (D). Insert 2 5/16x2.25" Screws (M) from the outside and fasten them with Lock Nuts (O)

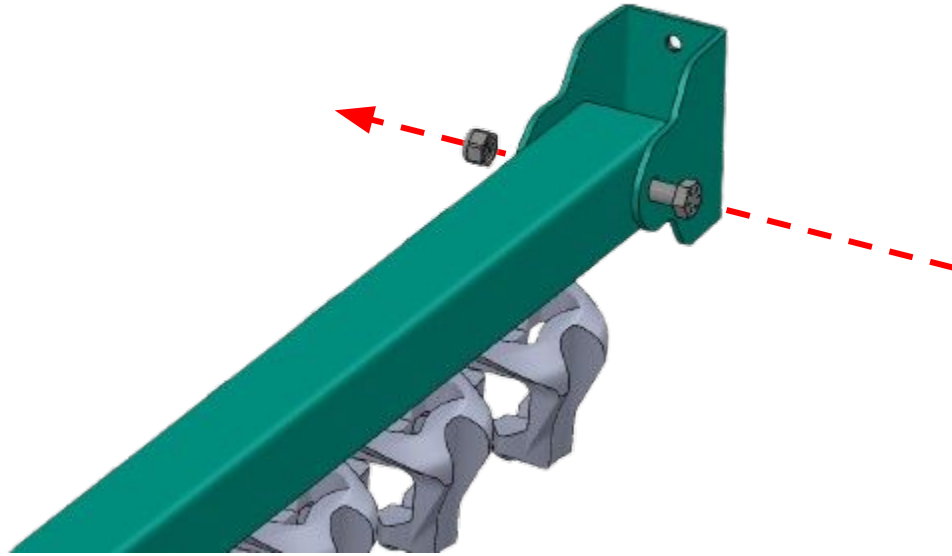


4

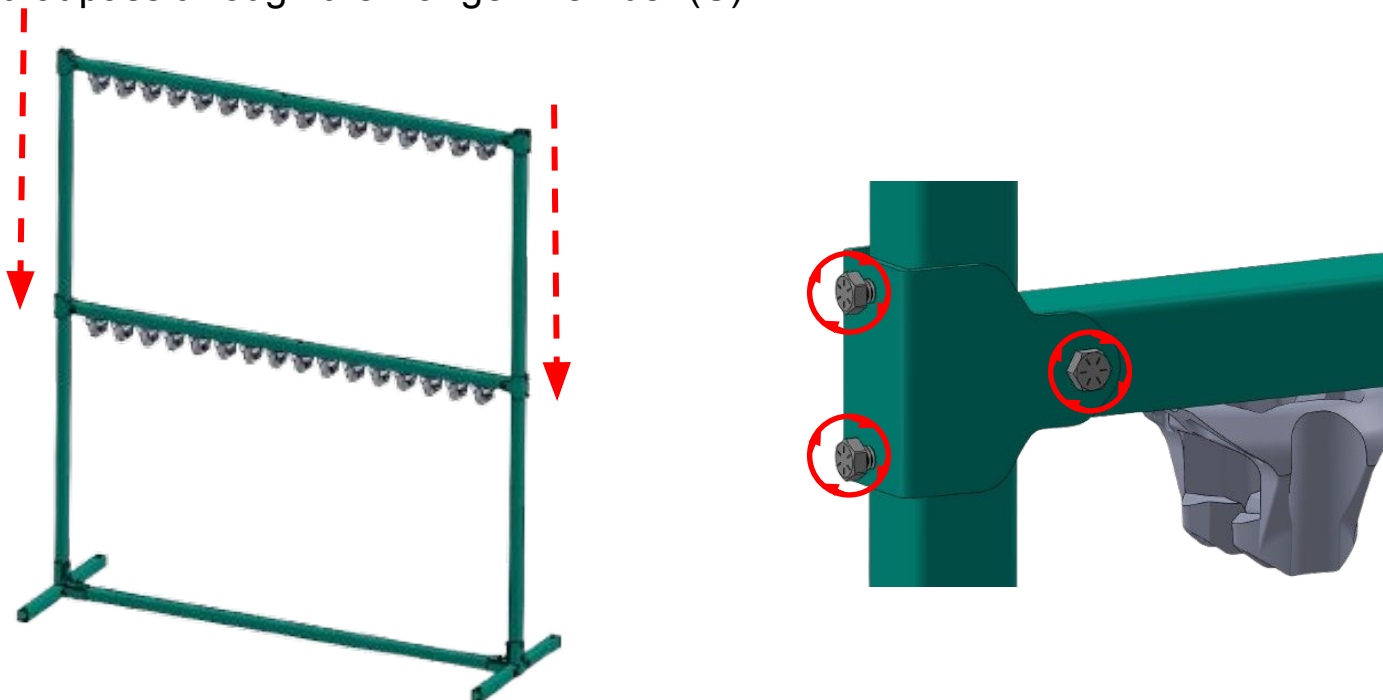
Locate the Hanger Member (C), Fixed Mounts (J), Fixed Mount Fillers (S) and #10-32 Thread Cutting Screws (P). place the Hanger Member on a work surface with the pilot holes facing upward. Install the screws with a #2 Phillips bit to mount 16 Fixed Mounts to the Hanger Member with 2 screws each. Place the Fixed Mount Filler (S) in position before screwing them both to the Hanger Member. An electric driver will make this task much quicker. ***For 2 Level Stock Racks, you must repeat this step.



- 5 Use a 5/16x2.25" Screw (M) and Lock Nut (O) to loosely fasten the bracket to the Hanger Member (C). Attach one bracket to each side of each Hanger Member.

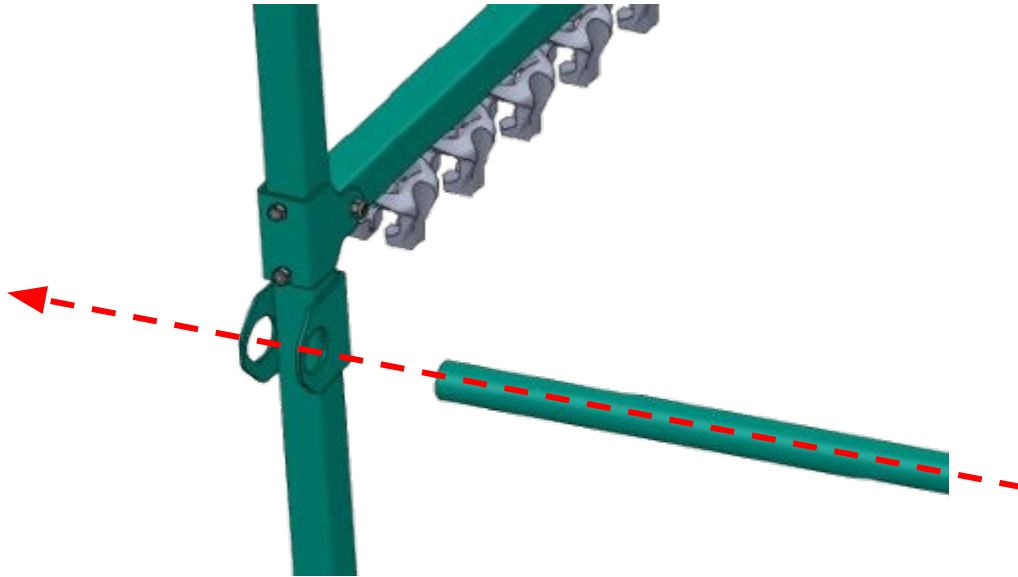


- 6 Insert 2 of the 1/2" screws (N) through the back side of the bracket. Only start threading them in, do not allow them to protrude into the inside of the bracket. Slide the Hanger Member and brackets over the Vertical Members and to the desired height. (a helper makes this step much easier). ***For 2 level Stock Racks, the first installed Hanger Member will be the lower level one. Slide it down to the desired height and tighten the 1/2" screws to lock it in position. Tighten these screws until they make contact with the Vertical Member and then tighten another 3/8 to 1/2 of a turn. Once positioned, tighten the longer screws that pass through the Hanger Member (C).



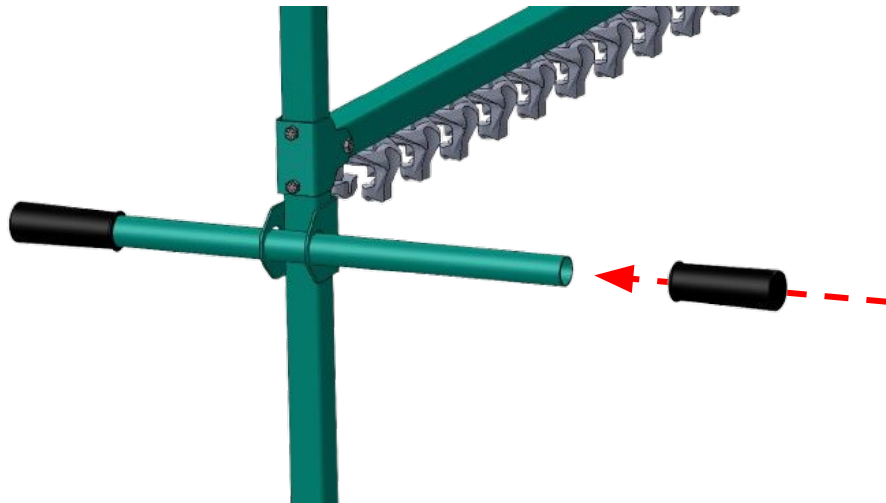
7

Locate the Handle Bracket (G), Handle Tube (I) and 4 of the 0.5" Screws (N). Insert 2 of the 1/2" screws (N) through the back side of the bracket. Only start threading them in, do not allow them to protrude into the inside of the bracket. Decide at what height you want the handles to be mounted. Slide the Handle Bracket over the Vertical Member (E) from the inside-out, near the desired height. Slide the Handle Tube into the bracket. Tension the (2) 0.5" long screws using the same method as in the previous step. Reposition the handle as needed by loosening the tensioning screws to allow repositioning.

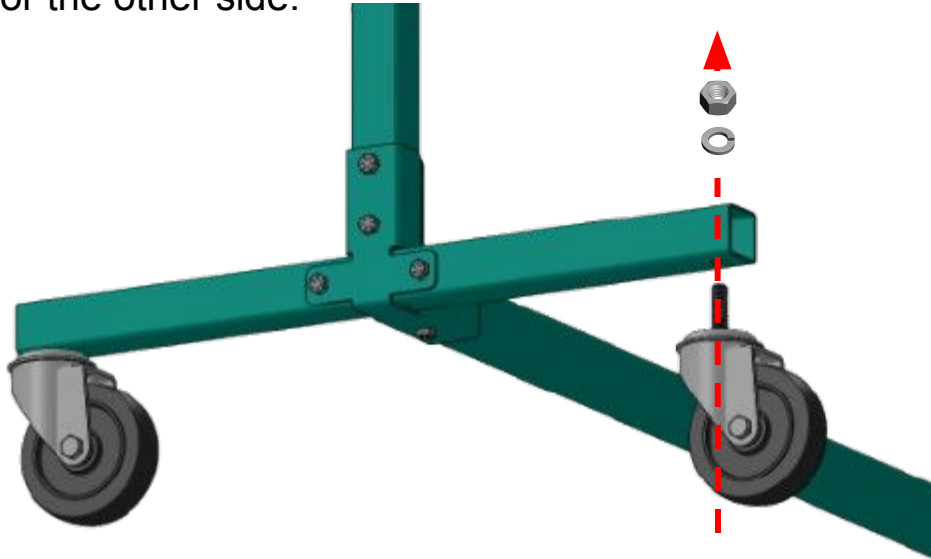


8

Collect the 4 Handle Grips (K) and slide them onto both sides of each Handle Tube (I).



Locate the 4 Threaded Casters (L), Caster Lock Washers (Q) and Caster Hex Nuts (R). Lift up one side of the Stock Rack enough to insert the caster stem into the Caster Leg Member (B) insert the caster from the bottom and place a lock washer and the nut onto the exposed stem. Tighten the nut until the lock washer compresses. Repeat for the other side.



Check to ensure all the fasteners are tightened. If there is racking or twisting, loosen the fasteners at the joints adjacent to the affected areas and re-tighten once properly aligned.

Assembly Complete