

PIVOTLINE[®]

Manual-Rail Finishing System

Spray Hub Spacer Instructions

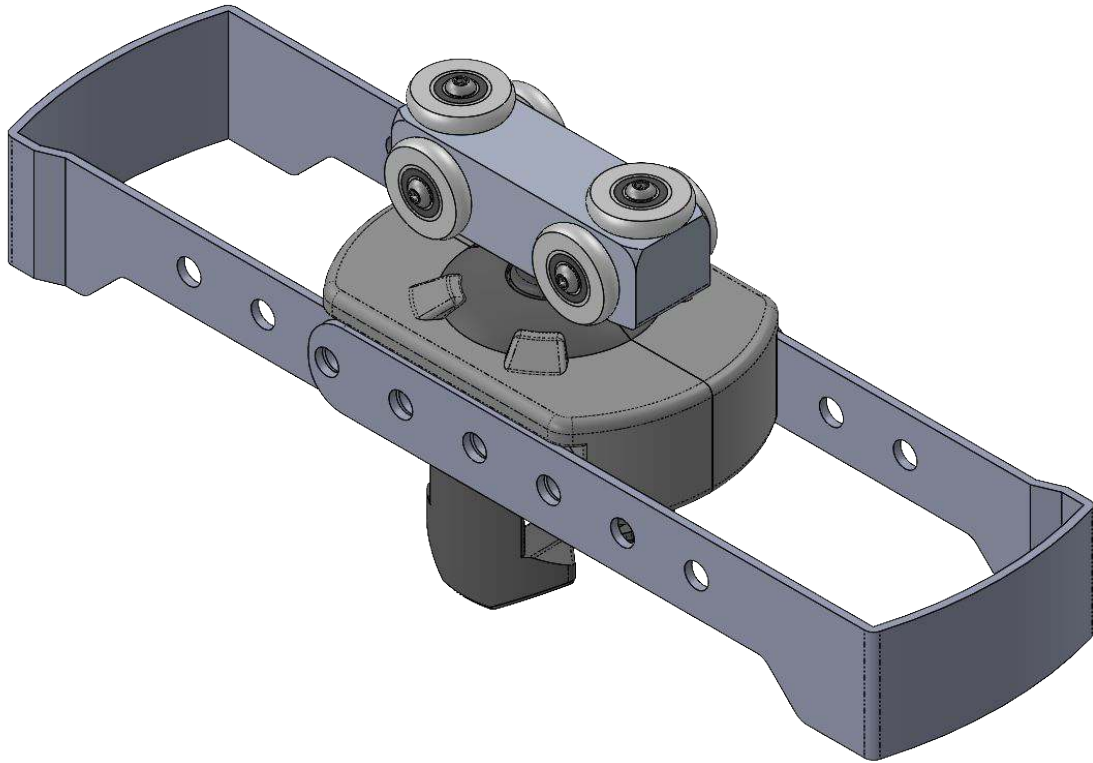


GS008-02 12/23



Guffey Systems

PivotLine Spray Hub Spacer Instructions

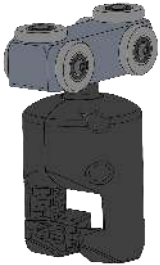


Components List (Part#)

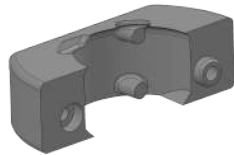
- 1- PivotLine Spray Hub (184)
- 2- Car Spacer Adapter (273)
- 2- Spacer Strap (275)
- 2- M6x1.0 80mm Long Screw(272)
- 2- M6x1.0 Nylon Lock Nut (167)

- Gather all of the components from the Components List
- Collect the necessary tools:
 - 5mm Hex Driver
 - 10mm Wrench or Socket

PivotLine Spray Hub (184)



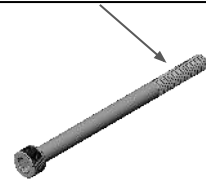
Car Spacer Adapter (273)



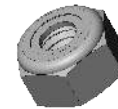
Spacer Strap (275)



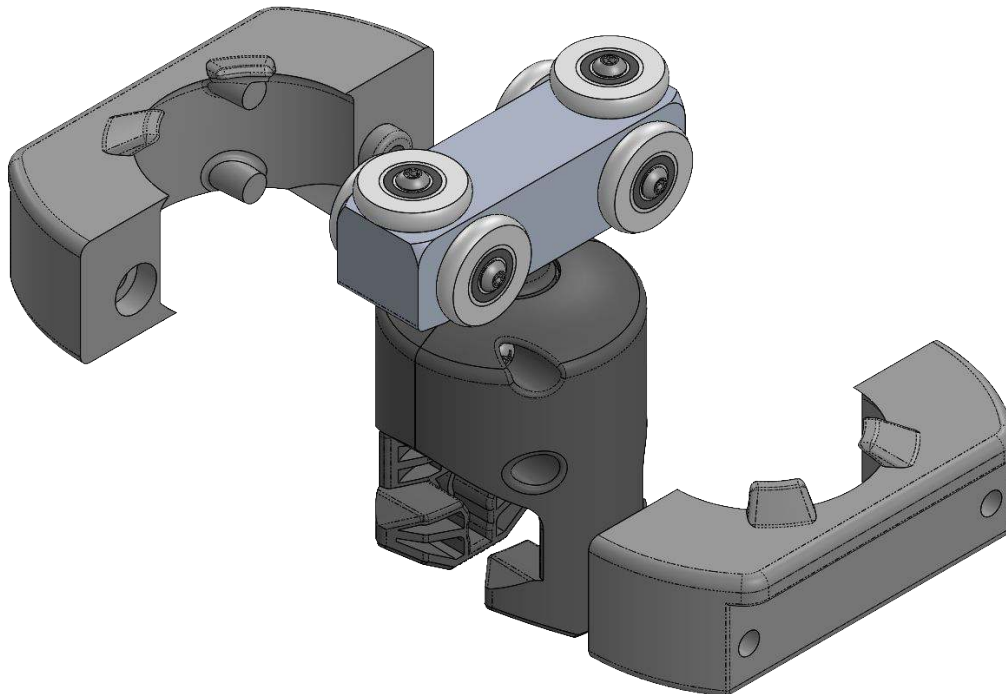
80mm Long M6 Screw (272)



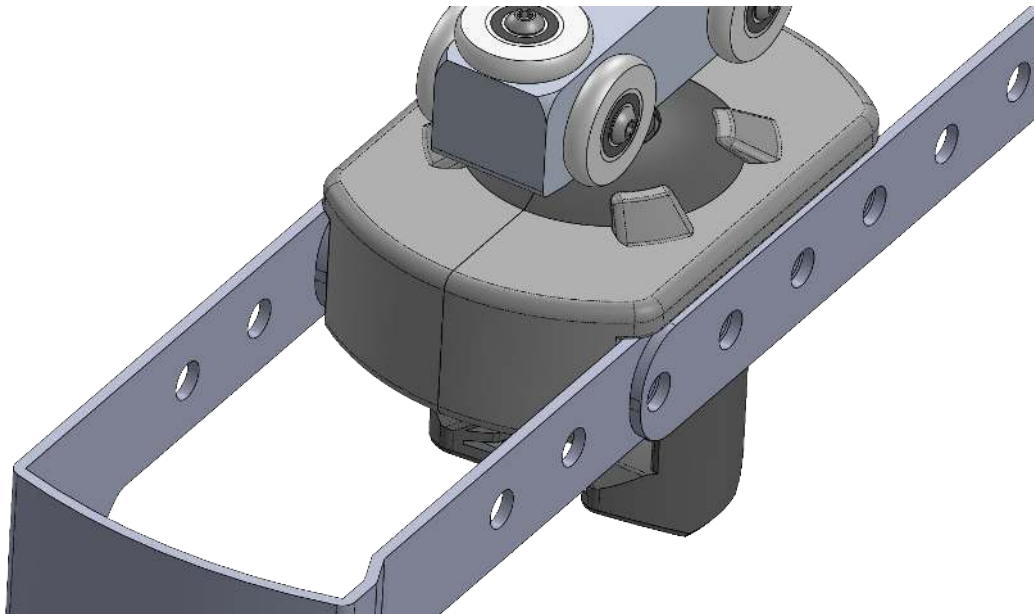
M6 Nylon Lock Nut (167)



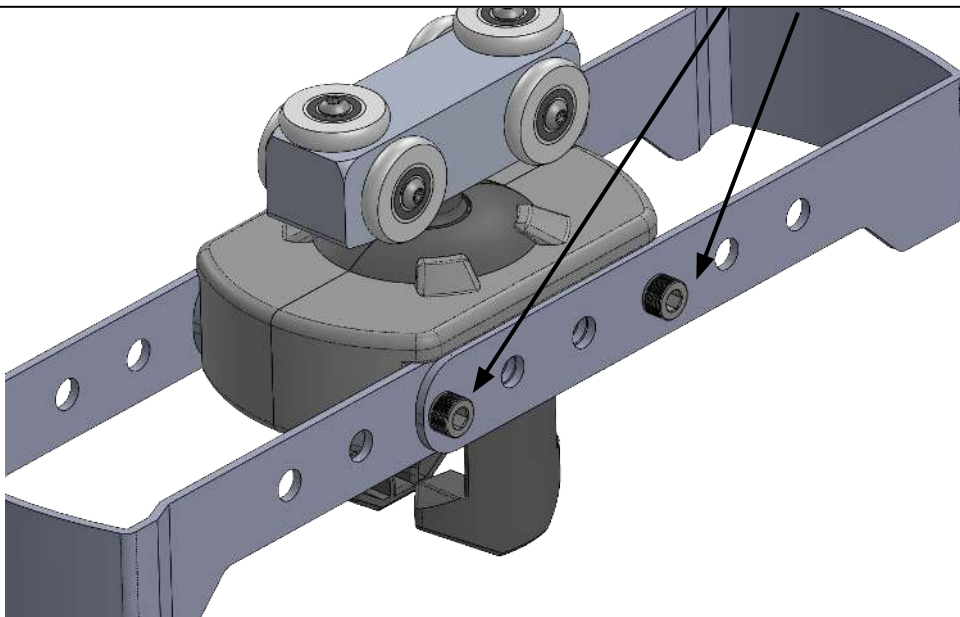
- Begin by placing the 2 Car Spacer Adapters (273) onto the PivotLine Spray Hub (184). The 2 bosses on each half of the spacer go into the screw holes on the Spray Hub



- Next, align the 2 Spacer Straps (275) in the channel of the Spacer Adapter (273) at the desired spacing. Make sure to align the straps so that both screws go through both straps



- Next, insert the 2-80mm Long M6 Screws (272) through the Spacer Straps (275) and Spacer Adapters (273). Thread the M6 locking nut (167) onto the threads of the screw. Tighten until snug using the 5mm hex driver and 10mm socket/wrench.



Assembly Complete