

PIVOT POINT™

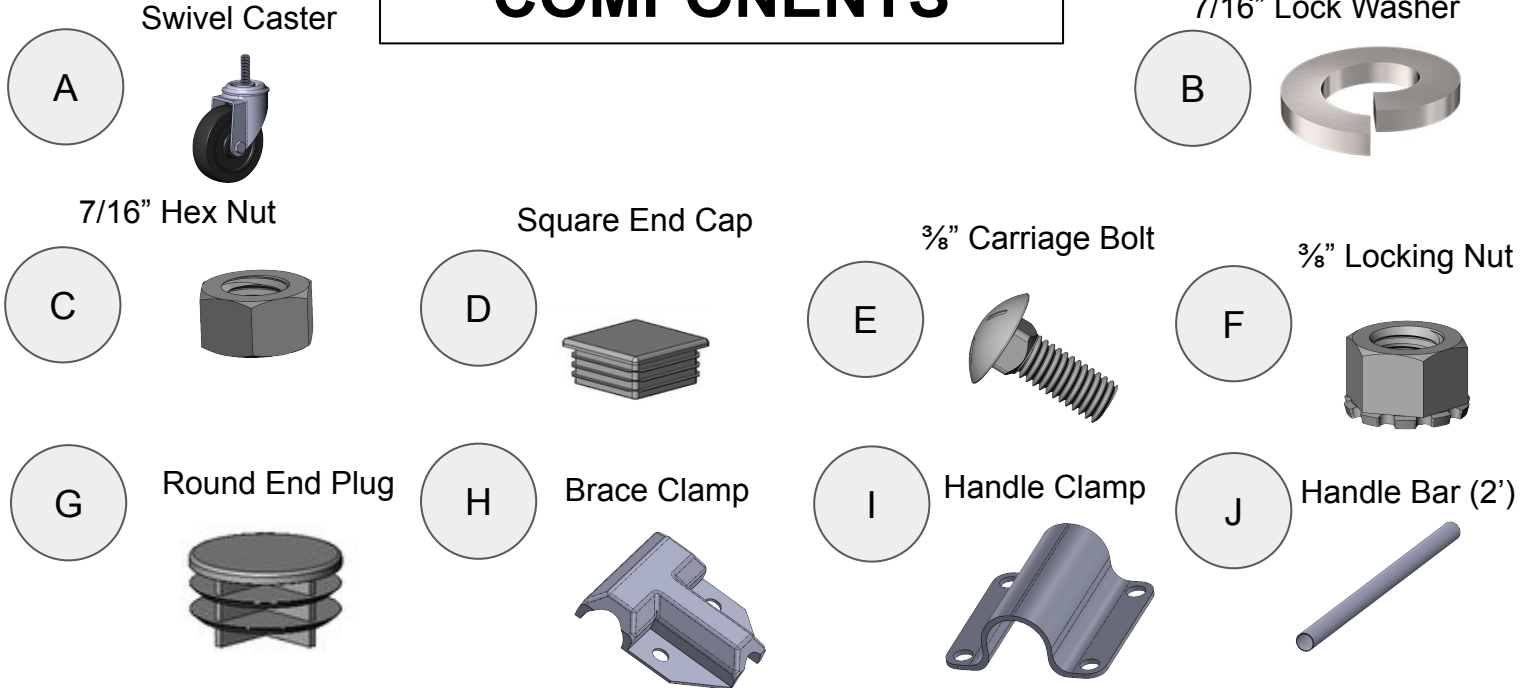
Touch-Free Batch Finishing

Stock Rack Assembly Guide



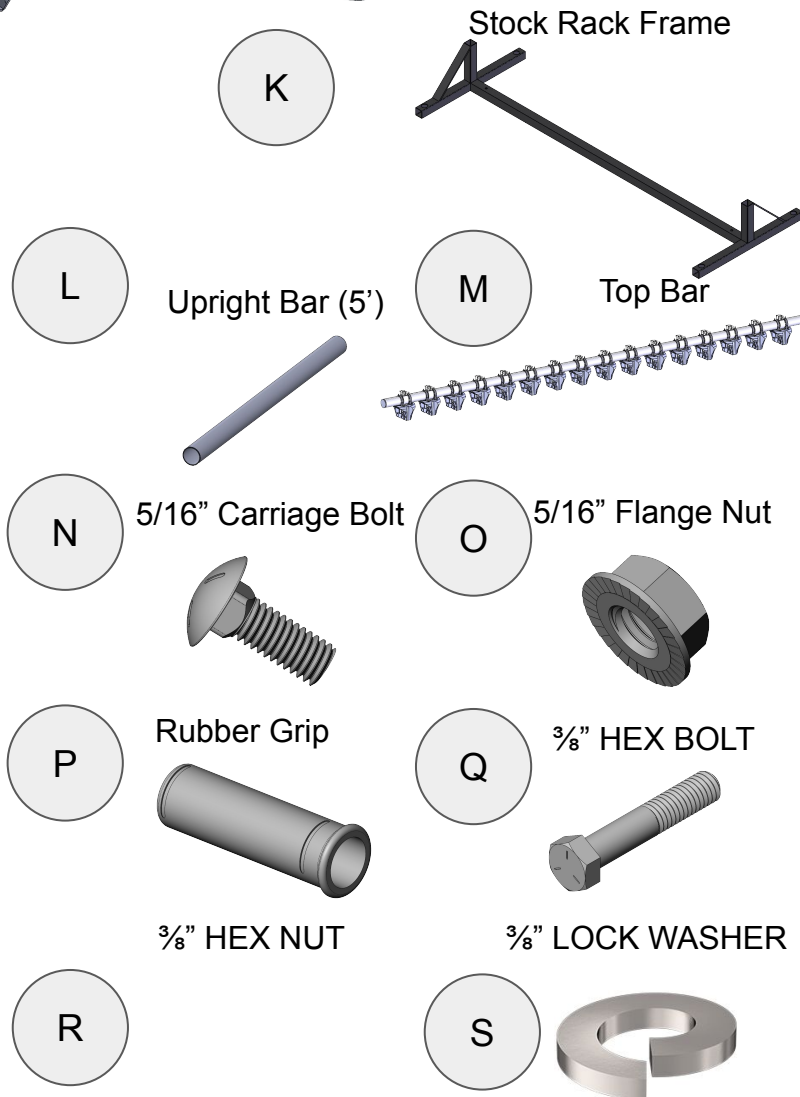
Revision 4 01/2024

STOCK RACK COMPONENTS



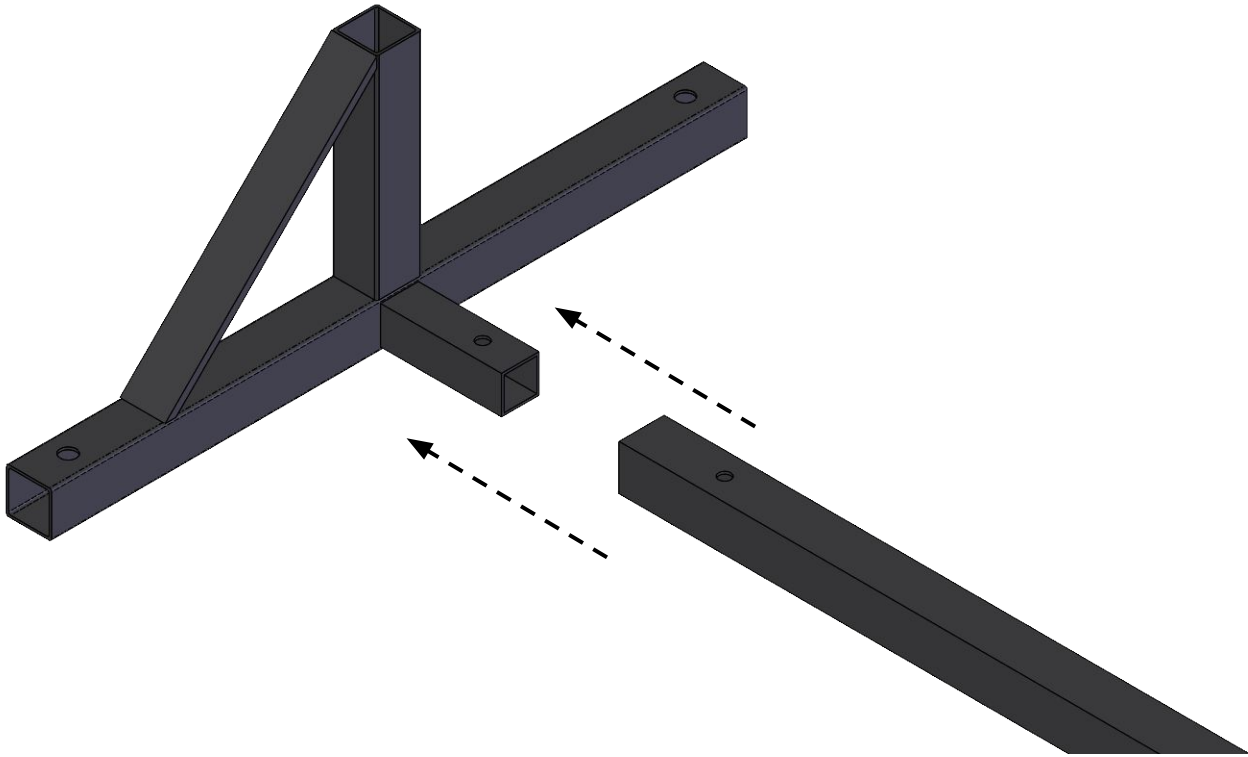
COMPONENT KEY

PART I.D.	DESCRIPTION
A	SWIVEL CASTER
B	7/16" LOCK WASHER
C	7/16" HEX NUT
D	SQUARE END CAP
E	3/8" CARRIAGE BOLT
F	3/8" LOCKING NUT (KEP)
G	ROUND END PLUG
H	BRACE CLAMP
I	HANDLE CLAMP
J	HANDLE BAR
K	STOCK RACK FRAME
L	UPRIGHT BAR
M	TOP BAR
N	5/16" CARRIAGE BOLT
O	5/16" FLANGE NUT
P	RUBBER GRIP
Q	3/8" HEX BOLT
R	3/8" HEX NUT
S	3/8" LOCK WASHER



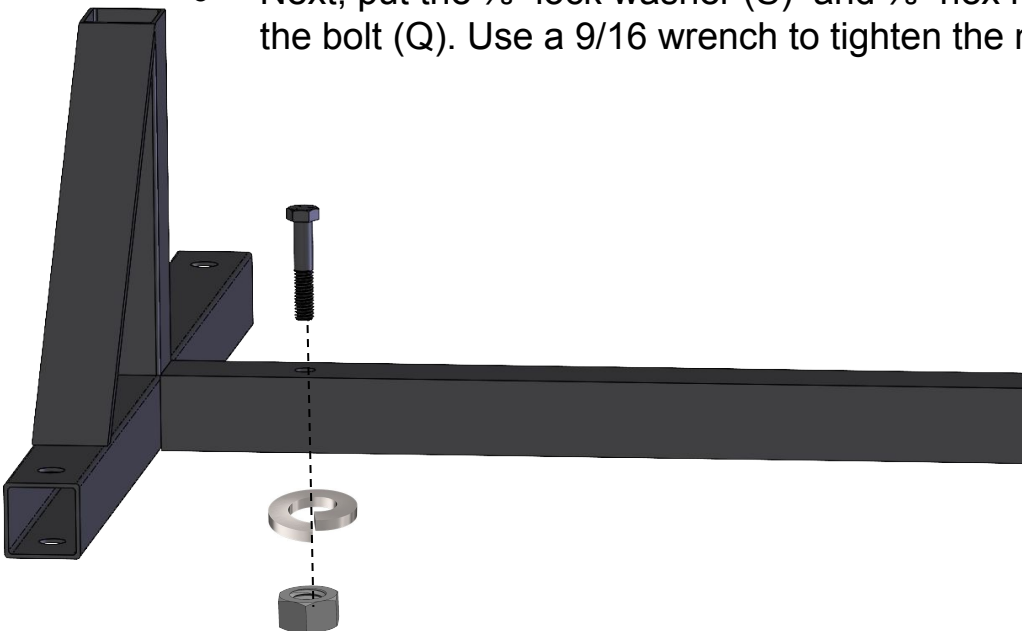
1

- Begin by assembling the Base Frame.
- Insert the end frames into each end of the crossbar



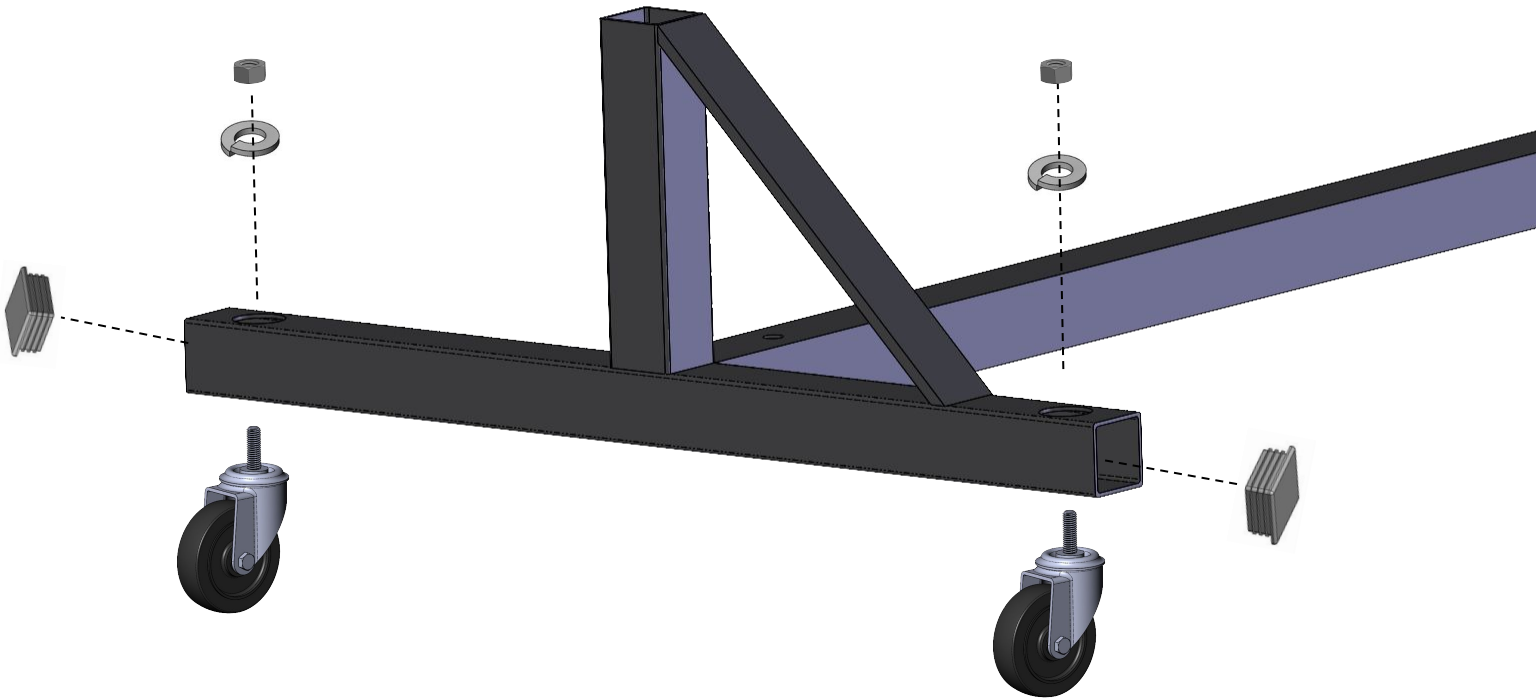
2

- Insert both $\frac{3}{8}$ "x2" long hex bolts (Q) through the top hole in each end of the crossbar.
- Next, put the $\frac{3}{8}$ " lock washer (S) and $\frac{3}{8}$ " hex nut (R) on the bottom of the bolt (Q). Use a 9/16 wrench to tighten the nut onto the bolt.



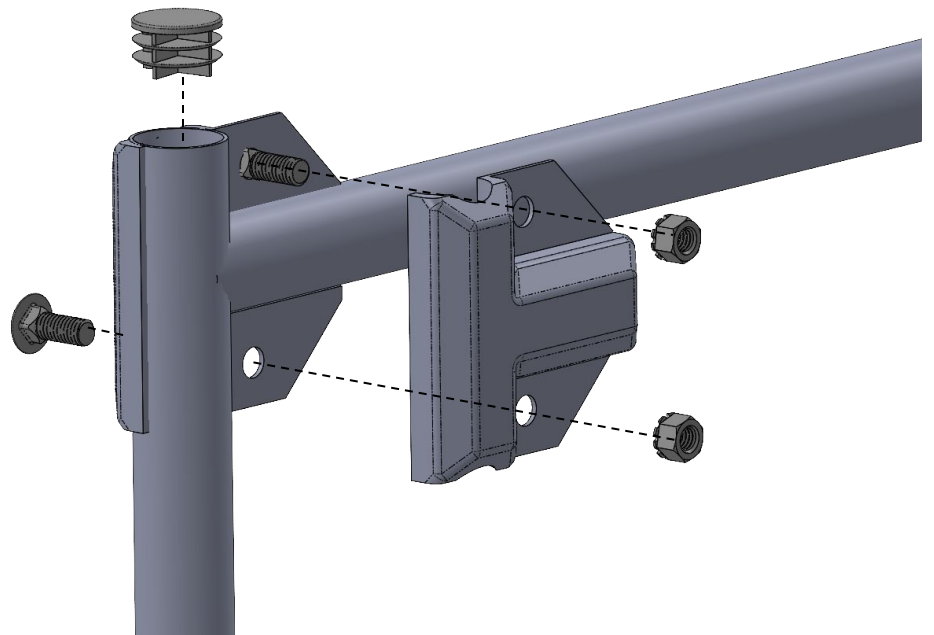
3

- Insert the casters (A) into the frame.
- Thread the 7/16" lock washer (B) and 7/16" hex nut (C) on to the caster stud.
- Insert the 4 square end caps (D) into the frame.



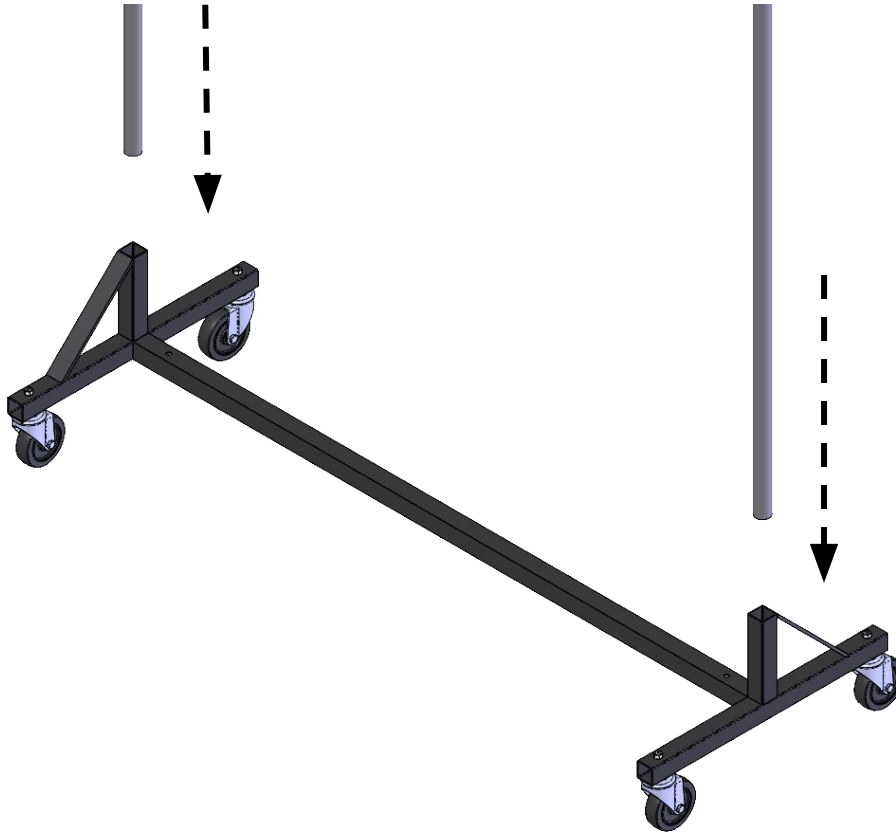
4

- Attach the top bar (M) to the upright bars (L) using brace clamps (H), 3/8" carriage bolts (E), and 3/8" lock nuts (F). The height of the top bar can be adjusted by loosening the nuts and raising or lowering the top bar (M).
- Insert a round end plug (G) into the top of each upright bar (L).



5

- Insert upright bars (L) into the frame (K).



6

- Arrange the handle clamps (I) so they are perpendicular to each other as shown. One clamp half straddles the upright bar (L), while the other clamp half straddles the handle bar (J). Insert 5/16" carriage bolts (N) and tighten 5/16" flange nuts (O).
- Slip on the rubber grips (P). It may be necessary to use soapy water to assist with assembly.

