

PIVOTPOINT™

Touch-Free Batch Finishing

Installation and Set-up Guide



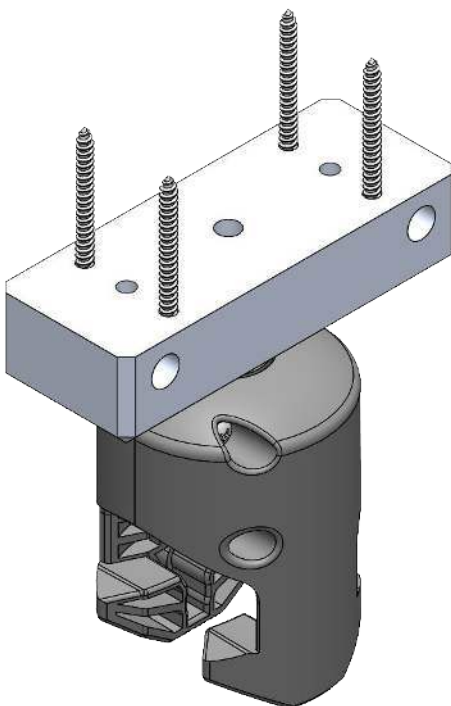
Revision 2 10/2023

 **Guffey Systems**
The Power of Productivity

The Guffey Systems PivotPoint is configurable to your specific situation. Some users choose the DIY option, while others will go with the complete Floor Stand setup. Follow the instructions that apply to you.

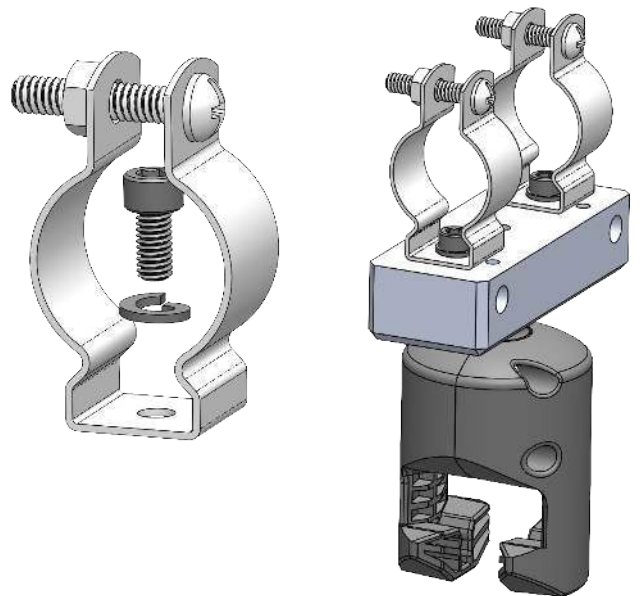
SCREWS

The PivotPoint has 4 mounting holes, sized for #8 wood screws or 5/32" (M4) tapered mounting hardware. Use this feature for mounting to wood structures or various other substrates. The holes use a tapered countersink so the hardware sits flush with the surface of the mounting block. Appropriate screw lengths will vary based upon the strength and thickness of the mounting material.

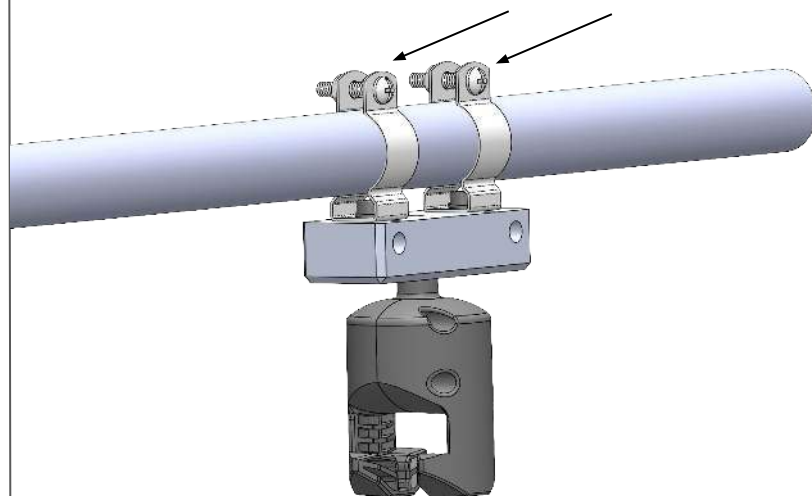


ROD CLAMPS

Insert the M6 screws and lock washers through the rod clamps. Tighten the screws with the clamps oriented as shown below.



Fix clamps to the rod and tighten the clamp screws until the PivotPoint no longer rotates.



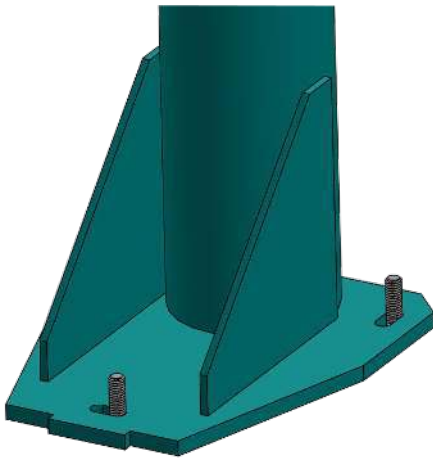
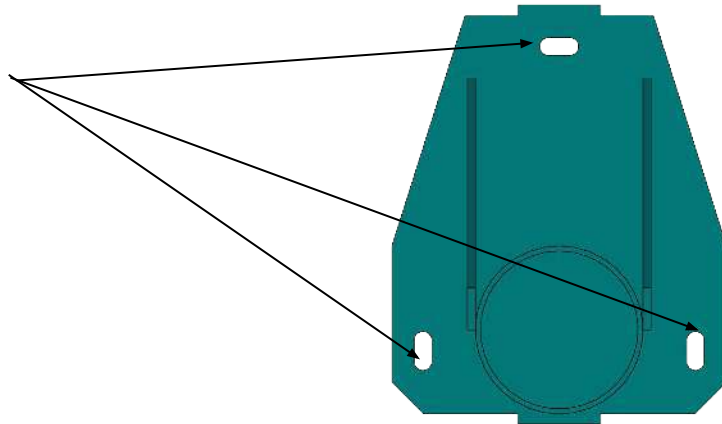
FLOOR STAND

Drill and Install Anchors.

Set the Floor Stand column in place. Mark the three (3) hole locations in the center of each slot on the column base. Remove column.

Drill $\frac{3}{8}$ " holes using the concrete bit provided. Each hole must be a minimum of 1.75in deep.

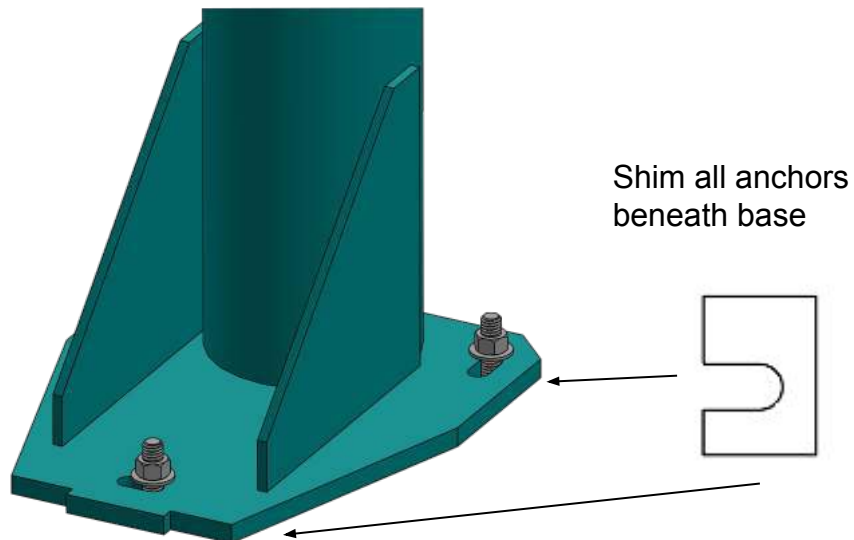
Insert the concrete floor anchors provided. Tap in with a hammer, leaving about 1in of thread protruding.



Install Floor Stands.

Attach columns to floor using washers and hex nuts included with the concrete anchors. Add a Shim under the base plate at each anchor to ensure stability. Add more shims as needed until column is plumb within $\frac{1}{2}$ " of vertical. Tighten anchors to 20 ft-lbs torque.

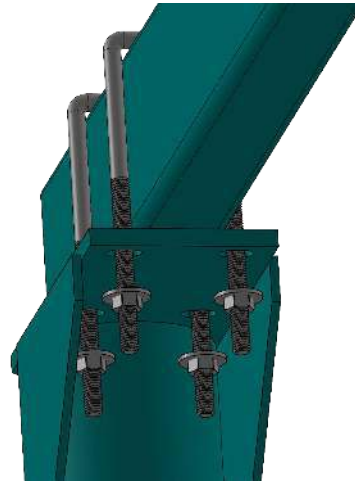
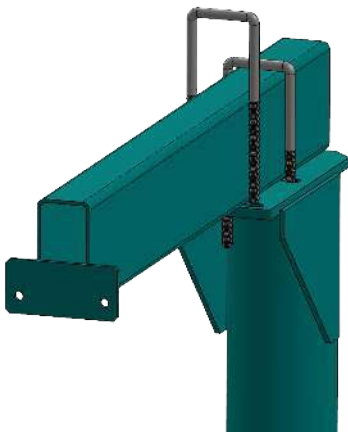
Assemble horizontal members to columns as shown, using the U-bolts with washers and nuts.



FLOOR STAND

Attach Horizontal Offset.

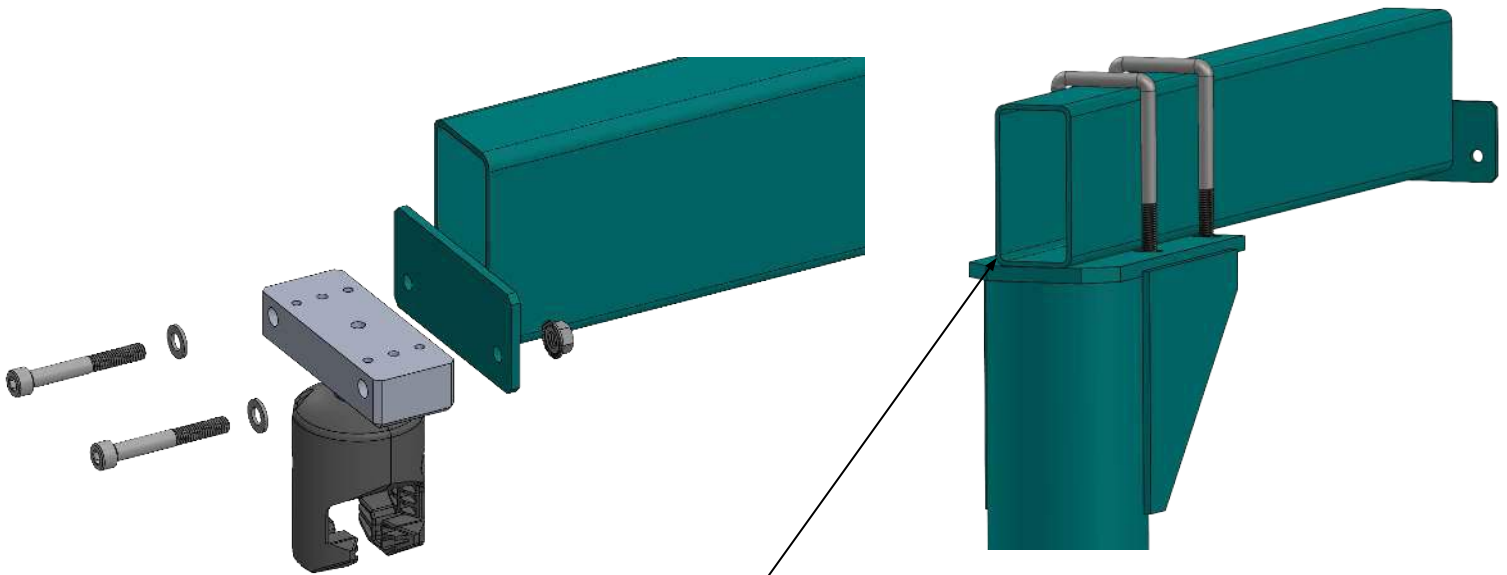
Place the horizontal offset on top of the Floor Stand Column and loosely attach the washers and nuts to the underside of the column.



Mount Offset & PivotPoint.

Align the rear face of the Horizontal Offset with the rear of the column as shown below. Tighten the nuts on the U-bolts to secure.

Attach the PivotPoint Assembly to the front of the Horizontal Offset with the included M8 screws, washers, and nuts.



Align these faces